

Microsoft Outlook Express Settings

Tools/ Accounts/ E-mail/ Add/ Mail...

Display Name:

Your Display Name

Next

E-mail Address:

Mailbox@YourDomainName

Next

Incoming Mail Server (POP3):

Mail.YourDomainName

Outgoing Mail Server (SMTP):

Mail.YourDomainName

Next

Account Name:

Mailbox@YourDomainName

Password:

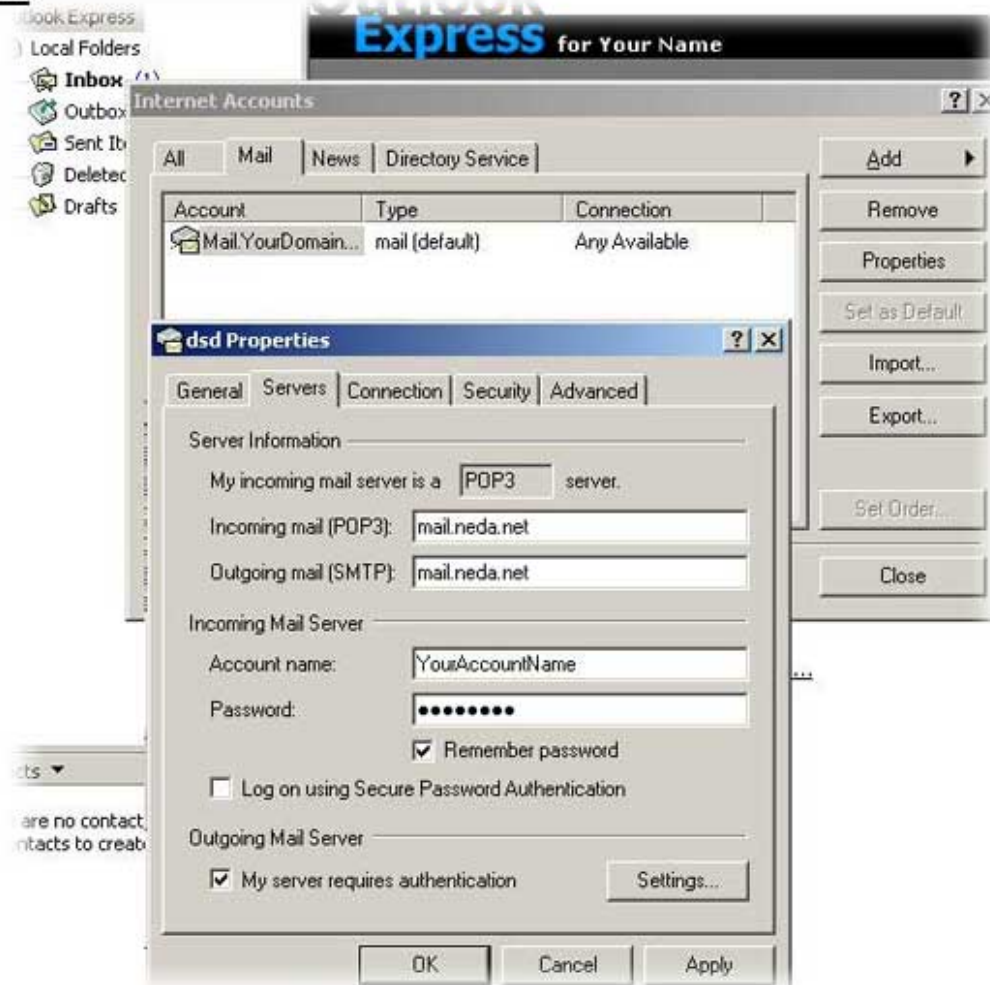
Mailbox Password

Next/ Finish

Properties/ Servers/ Outgoing Server

Check Mark: My outgoing server requires authentication

OK



Microsoft Outlook Settings

Tools/ E-mail Accounts/ E-mail/ Add a new E-mail Account

Next

POP3

Next

Your Name:

Your Display Name

E-mail Address:

Mailbox@YourDomainName

User Name:

Mailbox@YourDomainName

Password:

Mailbox Password

Incoming Mail Server (POP3):

Mail.YourDomainName

Outgoing Mail Server (SMTP):

Mail.YourDomainName

Next/ Finish

More Settings

Properties/ Servers/ Outgoing Server

Check Mark: My outgoing server requires authentication

OK

The image shows two overlapping dialog boxes from Microsoft Outlook. The background dialog is titled "E-mail Accounts" and contains "Internet E-mail Settings (POP3)". It has fields for "Your Name" (Your Display Name), "E-mail Address" (Mailbox@YourDomainName), "User Name" (Mailbox@YourDomainName), and "Password" (masked with asterisks). It also has fields for "Incoming mail server (POP3)" and "Outgoing mail server (SMTP)", both set to Mail.YourDomainName. There are checkboxes for "Remember password" (checked) and "Log on using Secure Password Authentication (SPA)". A "Test Account Settings ..." button is present. The foreground dialog is titled "Internet E-mail Settings" and has tabs for "General", "Outgoing Server", "Connection", and "Advanced". The "Outgoing Server" tab is active, showing a checked checkbox for "My outgoing server (SMTP) requires authentication". Below this are radio buttons for "Use same settings as my incoming mail server" (selected), "Log on using" (with fields for "User Name" and "Password", and a checked "Remember password" checkbox), "Log on using Secure Password Authentication" (unchecked), and "Log on to incoming mail server before sending mail" (unchecked). "OK" and "Cancel" buttons are at the bottom.